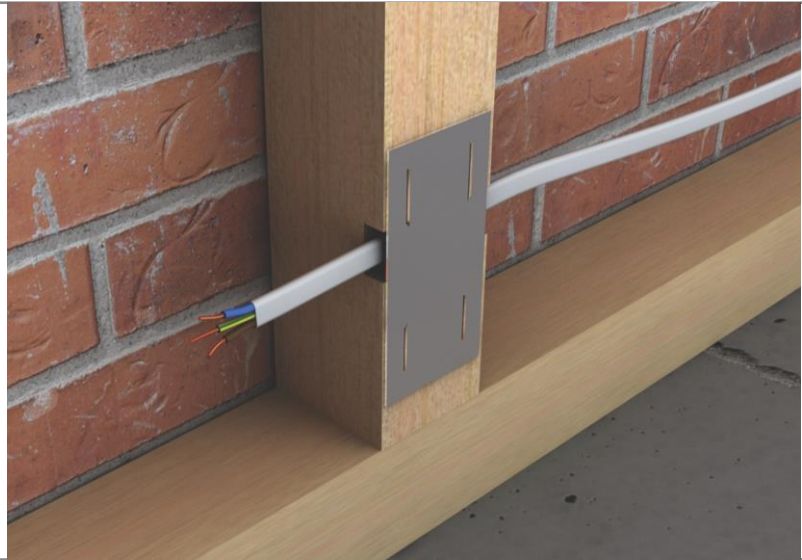
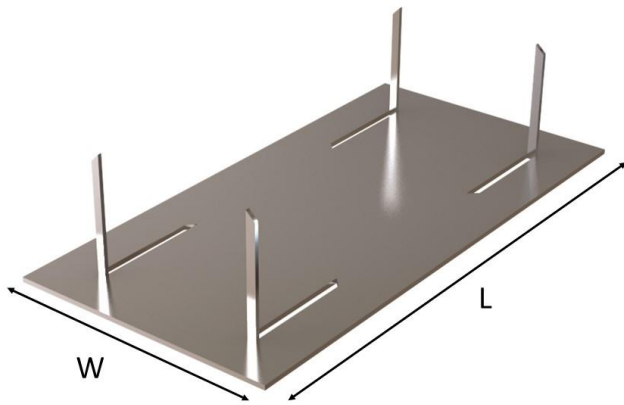


## SPL Safe Plate

The SPL is secured to timber studding by use of pre-punched spikes, to protect plumbing and electrical wiring against random nailing. Manufactured from 0.9mm pre-galvanised steel to BS EN 10346 DX51D +G275. Box quantity 200.



## Product

### SPL

Features:

- Easy to install

Packaging:

- Box Quantities 200

Product Details		
Product code	Dimensions (mm)	
	W	L
SPL/54	54	90