

COB LED Square Rim Adjustable Downlight Installation Instructions Page One

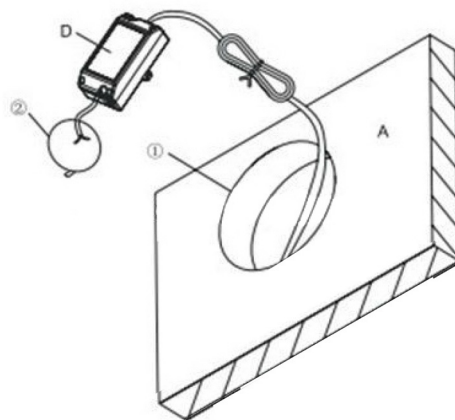


For model: COBDLSRA30W-40

**This installation must be carried out by an electrician.
Please read these instructions carefully before installation.
Leave a copy for the user/maintenance engineer for future reference.**

Specification

- COB LED Square Rim Adjustable Downlight
- 110-265V
- 30W Epistar COB LED
- 2900 Lumen output
- 4000K Colour temperature
- 45° Beam angle
- >80 Ra
- Three year guarantee
- Dimensions: L: 170 x W: 170 x Cut out: 150 x 150mm



Description

The LED Grid Downlight is an energy-efficient LED recessed ceiling fixture that is perfectly suited for mounting in system/hollow ceilings. The fixture provides a pleasant light array with a beam angle of 45°. The fixture comes completely with standard driver (included). It is mounted by using spring clamps connection.

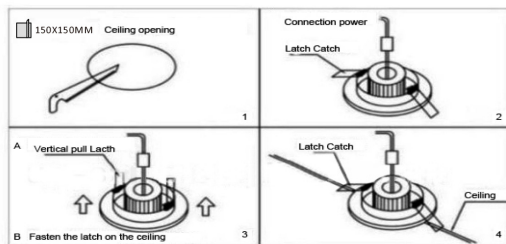
1. Make a hole.
 2. Connect the power wire.
 3. Push spring.
 4. Put the lamp in the hole.
- A.** Wall/ceiling 110-265V AC.
B. Spring.
C. LED Lamp.
D. Driver.

Package Contents

- One x 30W Downlight
- One x Driver with open cable end
- One x Installation Instructions

Safety Instructions

- Unplug mains before installing or wiring the fixture.
- Never look directly into the light source.
- User must follow the safety instructions and warning clauses written in these instructions.

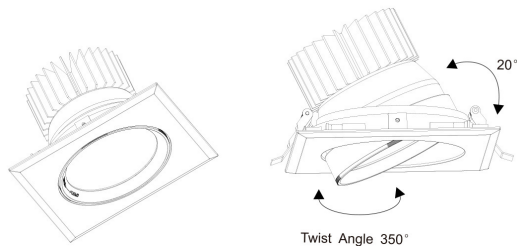


COB LED Square Rim Adjustable Downlight Installation Instructions

Page Two



For model: COBDLSRA30W-40

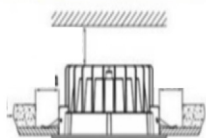


Warning

Please note electrical products can cause death or injury, or damage to property. This product should be installed by a qualified licensed electrician.

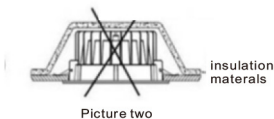
- Ensure the mains supply is switched off before commencing work.
- Before cutting, ensure that the hole does not impinge on joists, pipe work, cables or other building services.

As shown in the figure below, ensure strong insulation materials when installing this luminaire into the mounting hole.

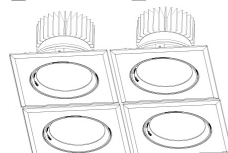
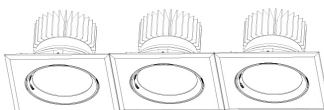
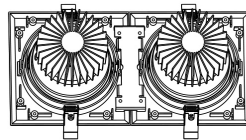
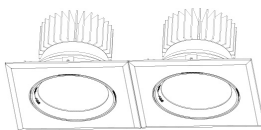


Picture one

1. Please turn off the power when installing.
2. Do not touch or grasp the downlight when it is on, as it may be hot.
3. Suitable working environment temperature: $-20^{\circ}\sim 45^{\circ}\text{C}$.
4. For indoor use application only.



Picture two



Guarantee

This product is guaranteed for a period of three years from the date of purchase. The guarantee is invalid in the case of improper use, tampering, removal of the Q.C. date label, installation in an improper working environment or installation not according to the current edition of the I.E.E. Wiring Regulations (BS7671). The guarantee is also invalidated if the luminaire has been Mega tested. Should this product fail during the guarantee period it will be replaced free of charge, subject to correct installation and return of the faulty unit. We do not accept responsibility for any installation costs associated with the replacement of this product. Your statutory rights are not affected. We reserve the right to alterspecifications without prior notice.



RoHS



CE