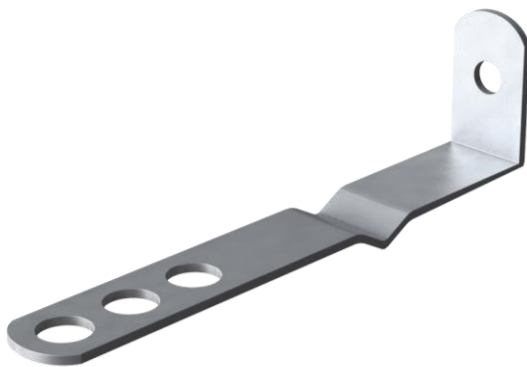


Lateral Restraint Products

These products allow masonry walls to be restrained back to other elements of the structure. This could be pre-existing walls, or new or pre-existing steel work. The ties, once in position, prevent sideways movement between a wall and another structure.



Product

VE7D Frame Cramp with Drip

Frame Cramp supplied with a drip to prevent moisture crossing the cavity. Drip position 90mm from safety end as standard.

Sizes:	125mm	225mm
	150mm	250mm
	175mm	275mm
	200mm	300mm

Performance

VE7D 125mm-200mm	
Compressive Load Capacity	1770N
Tensile Load @ Capacity	1320N
Minimum Embedment	62.5mm
Minimum Mortar Joint	10mm

VE7D 225mm-300mm	
Compressive Load Capacity	1470N
Tensile Load @ Capacity	1320N
Minimum Embedment	62.5mm
Minimum Mortar Joint	10mm

Safety Precautions

VE7D Frame Cramps with Drip are manufactured from sheared plate and strip so may contain sharp edges. Suitable personal protection should always be used when handling/installing these products.