

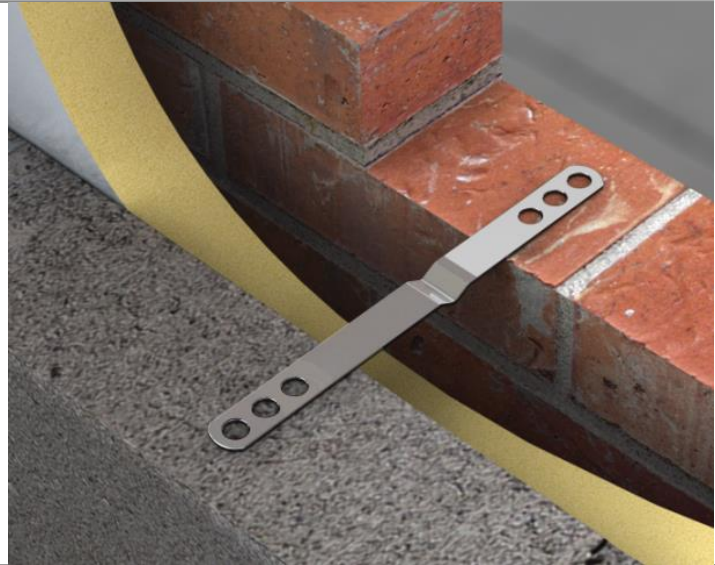
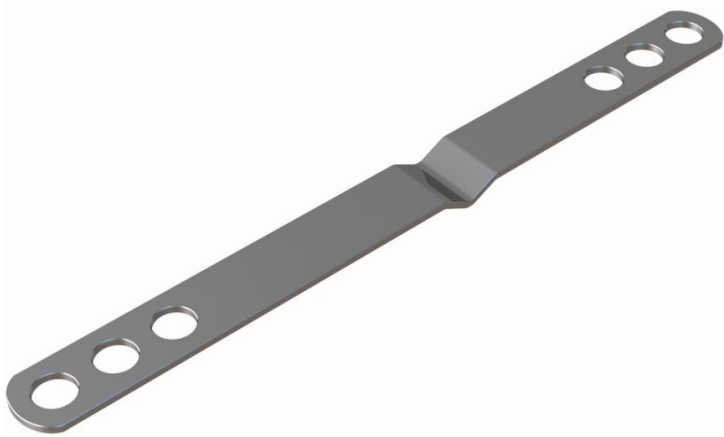


# VS6 Heavy Duty Dripped Safety Tie

Data Sheet

## Masonry to Masonry Wall Ties

These products act to secure two leaves of a cavity wall to each other, allowing them to act as one structurally. A cavitytie usually incorporates some mechanism, (usually a change of shape) to discourage moisture moving across the tie. Most cavity ties are available with a dedicated clip to secure insulation (usually in sheet form) within the cavity.



## Product

### VS6 Heavy Duty Dripped Safety Tie

Drip feature to prevent moisture travelling across the cavity (taking less space than vertical twist). Drip position 90mm from safety end as standard.

250mm long stainless steel Wall Ties supplied by Vista Engineering Limited, were tested in tension and compression over a normal cavity width of 125mm in accordance with BS EN 846-6 Methods of Test Ancillary Components for Masonry. Part 5; Determination of tensile and compressive load capacity and load displacement characteristics of wall ties (Couplet Test).

## Test Results

Summary of Declared Values of Vista Engineering Limited 250mm long ties tested in tension and compression at a standard cavity width of 125mm.

Load Direction	Maximum Declared Value at Ultimate load (N)
275mm Tension Reading	
Tension	>5000
Compression	>5000

### Part E - Type A ties for party or external walls

These ties must either be butterfly ties to BS1243 (only used in 50mm-75mm cavities) or ties with a measured dynamic stiffness of <math><113\text{MN/m}^3</math> taking both cavity width and tie density into account.

Independent tests have proved that Vista VS6 Heavy Duty Flat Safety Tie has a measured dynamic stiffness of <math><113\text{MN/m}^3</math> in a 100mm cavity and is therefore more than suitable for external walls as standard density of 2.5 per square metre.

Head Office: Vista Engineering Ltd, Carr Brook Works, Elnor Lane, Whaley Bridge, High Peak SK23 7JN  
Tel: Sales: +44 (0) 1663 736 700 Fax: +44 (0) 1663 736 710

Scotland Office: Vista Engineering Ltd, 79 Dunn Street, Parkhead, Glasgow, G40 3PA  
Tel: +44 (0) 141 613 3144 Fax: +44 (0) 141 613 3031

web: [www.vistaeng.co.uk](http://www.vistaeng.co.uk) email: [sales@vistaeng.co.uk](mailto:sales@vistaeng.co.uk)

