

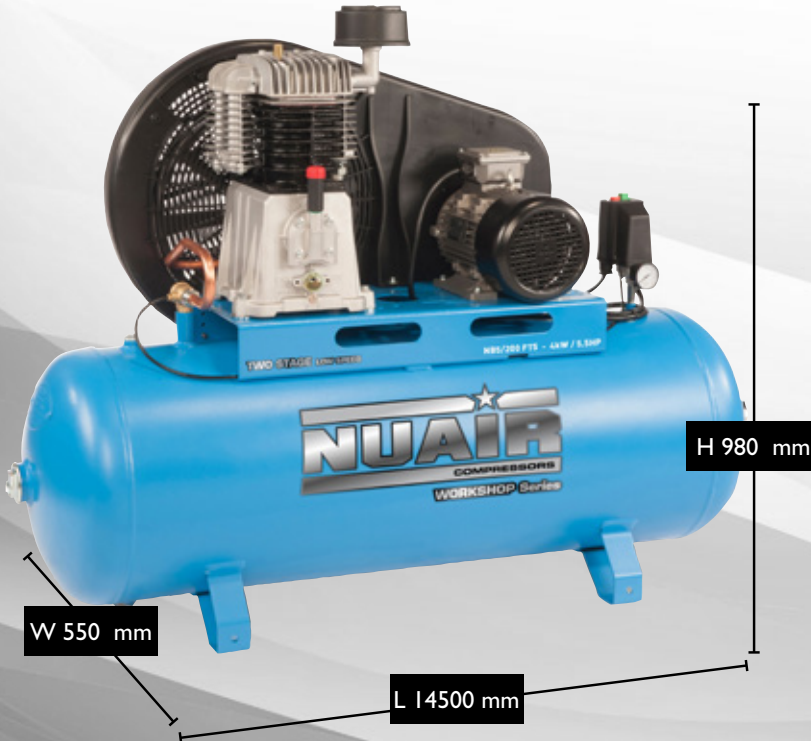
DATA SHEET

NB5/200 FT5

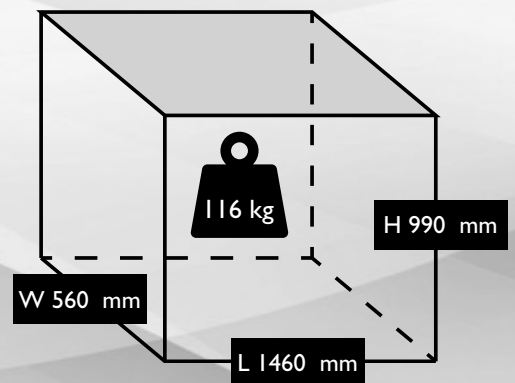
S-N5LN701FPS017



UNIT DIMENSIONS



PACKAGE DIMENSIONS



TECHNICAL DATA

	Max. Pressure	10 Bar / 145 PSI
	Power	5.5 HP / 4.0 kW
	Capacity (displacement)	23.7 CFM / 670 L/Min
	Voltage	400 V / 50 Hz
	Supply	16
	FLC	10
	Pump	NB5 (S-N50000A)
	dB(A)	
	Dimensions L x W x H (unit)	1450 x 550 x 980 mm

	Dimensions L x W x H (boxed)	1460 x 560 x 990 mm
	Weight	116 kgs
	Motor Speed	2850 RPM
	Oil Capacity	2 Ltr
	Receiver Size	200 Ltr
	Head Bolt Torque	45 Nm
	Cable Length	2 Mtr
	Pump Speed	920 RPM
	Outlet Thread Size	1/2" BSP



E & OE
Images shown are for illustration and may vary from the actual product

Unit 5, Tower Estate,
Warpsgrove Lane,
Chalgrove,
Oxon,
OX44 7XZ

Tel: +44(0)1865 892620
Fax: +44(0)1844 390955

sales@fps-compressors.co.uk
www.fps-compressors.co.uk

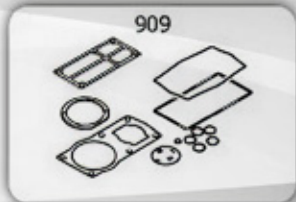
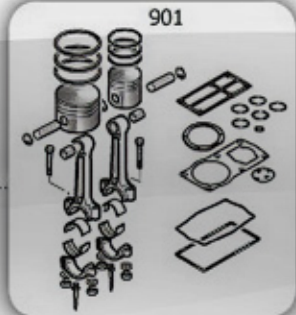
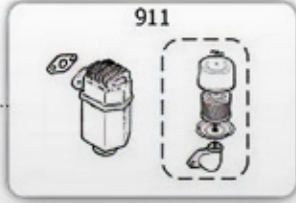
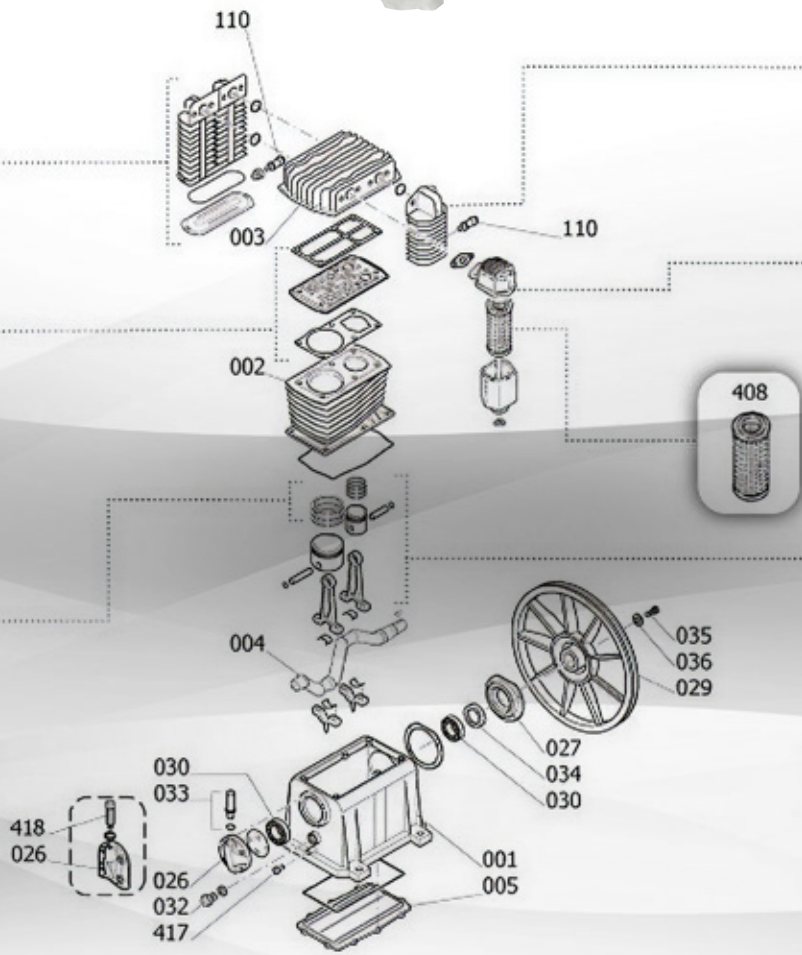
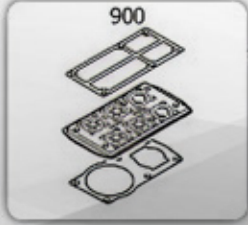


DATA SHEET

NB5 PUMP

S-N50000A

NB5/200 FT5 (S-N5LN70IFPS017)



AT5KT

COMPONENTS / SERVICE PARTS

Position	Part No.	Description
2	F-113141013	Cylinder
3	F-113178002	Head
900	S-9434A04	Valve Plate
901	S-9434B05	Con Rod Complete
909	S-9434F04	Gasket Kit
911	S-9420936	Air Filter Element

Part No.	Description
S-PK-NB5	Service Kit
S-9048003	NRV
S-9063148	Pressure Switch
LUB-PIST-ILT	Lubricant
N/A	Capacitor (motor)



E & OE
Images shown are for illustration and may vary from the actual product

Unit 5, Tower Estate,
Warpsgrove Lane,
Chalgrove,
Oxon,
OX44 7XZ

Tel: +44(0)1865 892620
Fax: +44(0)1844 390955
sales@fps-compressors.co.uk
www.fps-compressors.co.uk

