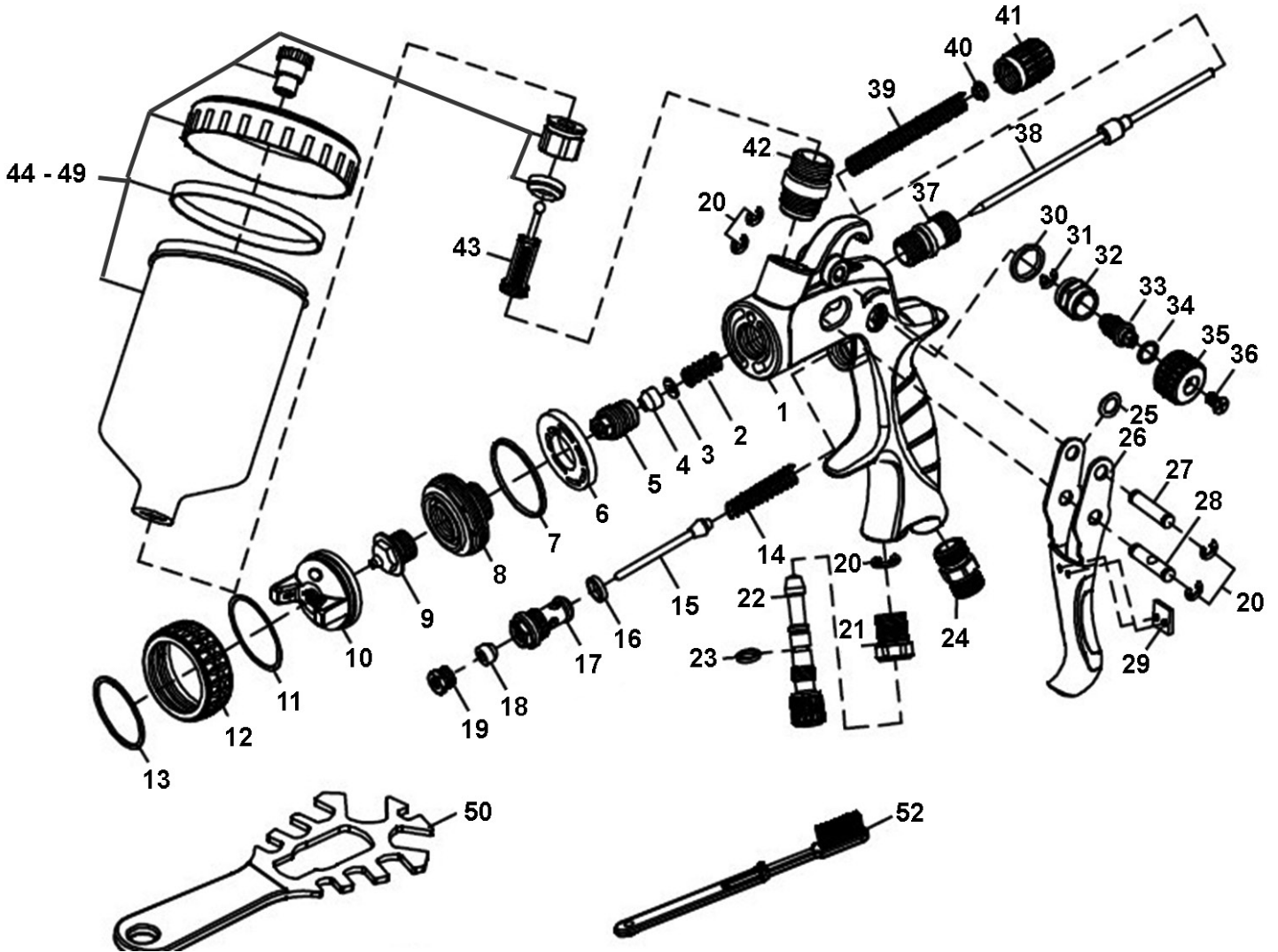




Parts Information:
Gravity Feed Spray Gun
Model No: HVLP01.V2 / LVLP01 /
SP01



NOTE: It is our policy to continually improve products and as such we reserve the right to alter data, specifications and component parts without prior notice. There may be alternative versions of this product, please contact us should you require this information.

IMPORTANT: No liability is accepted for incorrect use of product. Spare parts must be fitted by a competent person

WARRANTY: Guarantee is 12 months from purchase date, proof of which will be required for any claim.

Sealey Group, Kempson Way, Suffolk Business Park, Bury St Edmunds, Suffolk. IP32 7AR



01284 757500



01284 703534



sales@sealey.co.uk



www.sealey.co.uk



Parts Information:
Gravity Feed Spray Gun
Model No: HVLP01.V2 / LVLP01 /
SP01

Item	Part No.	Description
1	SP01.01	Gun Body
2	SP01.02	Needle Packing Spring
3	SP01.03	Needle Packing Washer
4	SP01.04	Needle Packing Gasket
5	SP01.05	Needle Packing Screw
6	SP01.06	Air Baffle
7	SP01.07	Washer for Fluid Nozzle Seat
8	SP01.08	Fluid Nozzle Seat
9	SP01.09	Fluid Nozzle 1.4mm
--	SP01.09A	Fluid Nozzle 1.2mm
--	SP01.09B	Fluid Nozzle 1.3mm
--	SP01.09C	Fluid Nozzle 1.7mm
--	SP01.09D	Fluid Nozzle 1.8mm
10	SP01.10	Air Cap 1.4mm (for SP01 only)
--	SP01.10A	Air Cap 1.2mm (for SP01 only)
--	SP01.10B	Air Cap 1.3mm (for SP01 only)
--	SP01.10C	Air Cap 1.7mm (for SP01 only)
--	SP01.10D	Air Cap 1.8mm (for SP01 only)
--	HVLP01.V2-10	Air Cap 1.3mm (for HVLP01.V2 only)
--	HVLP01.V2-10A	Air Cap 1.4mm (for HVLP01.V2 only)
--	HVLP01.V2-10B	Air Cap 1.7mm (for HVLP01.V2 only)
--	LVLP01.10	Air Cap 1.4mm (for LVLP01 only)
--	LVLP01.10A	Air Cap 1.2mm (for LVLP01 only)
--	LVLP01.10B	Air Cap 1.3mm (for LVLP01 only)
--	LVLP01.10C	Air Cap 1.7mm (for LVLP01 only)
--	LVLP01.10D	Air Cap 1.8mm (for LVLP01 only)
11	SP01.11	Washer for Air Cap
12	SP01.12	Locking Ring (Blue/White) (for SP01 only)
--	HVLP01.V2-12	Locking Ring (Red/White) (for HVLP01.V2 only)
--	LVLP01.12	Locking Ring (Green/White) (for LVLP01 only)
13	SP01.13	Retainer
14	SP01.14	Air Valve Spring
15	SP01.15	Air Valve Spindle
16	SP01.16	Air Valve Washer
17	SP01.17	Air Valve
18	SP01.18	Air Valve Seat
19	SP01.19	Sealing Screw
20	SP01.20	Retainer 5mm
21	SP01.21	Air Adjustment Adaptor
22	SP01.22	Air Adjustment Knob (Blue/White) (for SP01 only)

Item	Part No.	Description
--	HVLP01.V2-22	Air Adjustment Knob (Red/White) (for HVLP01.V2 only)
--	LVLP01.22	Air Adjustment Knob (Green/White) (for LVLP01 only)
23	SP01.23	Gland Seal
24	SP01.24	Air Adaptor
25	SP01.25	Washer for Trigger Pin
26	SP01.26	Trigger
27	SP01.27	Trigger Pin
28	SP01.28	Hinge Pin
29	SP01.29	Washer (Square)
30	SP01.30	Gasket
31	SP01.31	Retainer 4mm
32	SP01.32	Spray Pattern Adjustment Adaptor
33	SP01.33	Spray Pattern Adjustment Lever
34	SP01.34	Washer
35	SP01.35	Spray Pattern Adjustment Knob (Blue/White) (for SP01 only)
--	HVLP01.V2-35	Spray Pattern Adjustment Knob (Red/White) (for HVLP01.V2 only)
--	LVLP01.35	Spray Pattern Adjustment Knob (Green/White) (for LVLP01 only)
36	SP01.36	Spray Pattern Adjustment Knob Screw
37	SP01.37	Needle Adjustment Adaptor
38	SP01.38	Fluid Needle 1.4mm
--	SP01.38A	Fluid Needle 1.2mm
--	SP01.38B	Fluid Needle 1.3mm
--	SP01.38C	Fluid Needle 1.7mm
--	SP01.38D	Fluid Needle 1.8mm
39	SP01.39	Needle Adjustment Spring
40	SP01.40	Spring Plug
41	SP01.41	Needle Adjustment Knob (Blue/White) (for SP01 only)
--	HVLP01.V2-41	Needle Adjustment Knob (Red/White) (for HVLP01.V2 only)
--	LVLP01.41	Needle Adjustment Knob (Green/White) (for LVLP01 only)
42	SP01.42	Fluid Pot Adaptor
43	SP01.43	Fluid Pot Filter
44	SP01.44-49	Fluid Pot Assembly (inc 44,45,46,47,48,49)
50	SP01.50	Multi-Purpose Spanner
52	SP01.52	Brush (A)

NOTE: It is our policy to continually improve products and as such we reserve the right to alter data, specifications and component parts without prior notice. There may be alternative versions of this product, please contact us should you require this information.

IMPORTANT: No liability is accepted for incorrect use of product. Spare parts must be fitted by a competent person

WARRANTY: Guarantee is 12 months from purchase date, proof of which will be required for any claim.

Sealey Group, Kempson Way, Suffolk Business Park, Bury St Edmunds, Suffolk. IP32 7AR



01284 757500



01284 703534



sales@sealey.co.uk



www.sealey.co.uk